

# STORK

sampling solutions



STORK RAIL



STORK COMPACT



STORK PRO





**STORK**  
sampling solutions

**DV GROUP**

**SINCE 1987  
WE TAKE CARE  
OF YOUR  
SAMPLES**

DV is an Italian company operating since 1982 in the field of water-purification plants, belt and spiral transporters. In the 1987 we started the production of the grain sampler. In a few years time we have become the italian leader of this product. Our headquarters are in the town of Pordenone in the northeast of Italy. We believe in embracing new technologies while respecting the natural environment, to offer a range of products and services to satisfy the needs of all our customers. Our machinery is developed using the very best raw materials and up-to-date technology, with attention paid to every detail. We aim to offer long-term reliability and guarantee a fast and efficient assistance network.





## MAIN ADVANTAGES OF AUTOMATIC SAMPLING

**AN UNSUITABLE  
SAMPLE MAKES  
THE ANALYSIS  
MEANINGLESS**



## STORK SAMPLERS SINCE 1987

the fastest, easiest and safest way  
to sample grain from an open  
trailer, essential for large farms,  
grain stores and mills.

## GOOD REASONS TO BUY A STORK

1

REPRESENTATIVE  
AND HOMOGENEOUS  
SAMPLE

2

STRONG FRAME  
LONG TERM  
RESISTANCE

3

POWERFUL 2,2 KW  
SIDE CHANNEL AIR  
BLOWER

4

SINGLE  
AND DUAL LANE  
CAPABILITY

5

RADIO REMOTE  
CONTROL  
INCLUDED

6

PRE-ASSEMBLED  
EASY TO INSTALL

7

MINIMUM  
MAINTENANCE

8

HIGH  
PENETRATION  
POWER

9

SUITABLE FOR ANY  
KIND OF CEREALS,  
SEEDS, FLOURS  
AND GRANULAR  
MATERIAL





## ENGINEERING DEPARTMENT FOR CUSTOMIZED SOLUTIONS

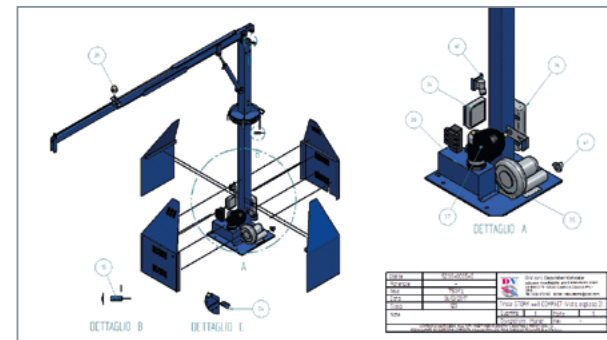
Thanks to more than 30 years' experience and based on the continuing success of our STORK SAMPLERS, DV srl offers customised samplers to suit every customer's needs.

**AMONG THE CUSTOMISED  
OPTIONS AVAILABLE, SAMPLERS  
CAN BE DESIGNED TO BE:**

- |  |                                     |   |
|--|-------------------------------------|---|
| <b>1</b><br>ROOF-MOUNTING<br>OR WALL-MOUNTING                | <b>2</b><br>ATEX<br>CONFORMING      | <b>3</b><br>EASILY MOVED<br>WITH A FORKLIFT |
| <b>1</b><br>PERMANENTLY<br>MOUNTABLE ON A<br>FLAT-BACK TRUCK | <b>2</b><br>TRANSPORTED<br>BY LORRY |   |



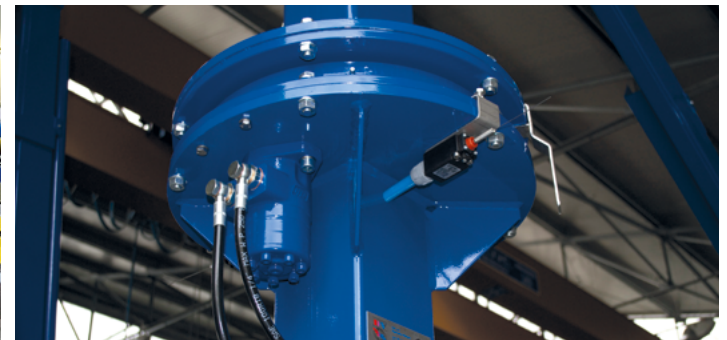
STORK "on the roof".



Solidedge 3D Design



DV Production Department



STORK 440 Rotary Bearing

## DESIGN AND PRODUCTION MADE IN ITALY

**SINCE 1998 WE ARE  
CERTIFIED ISO 9001**



STORK Mobile Sampling Station



Galvanized Sampler

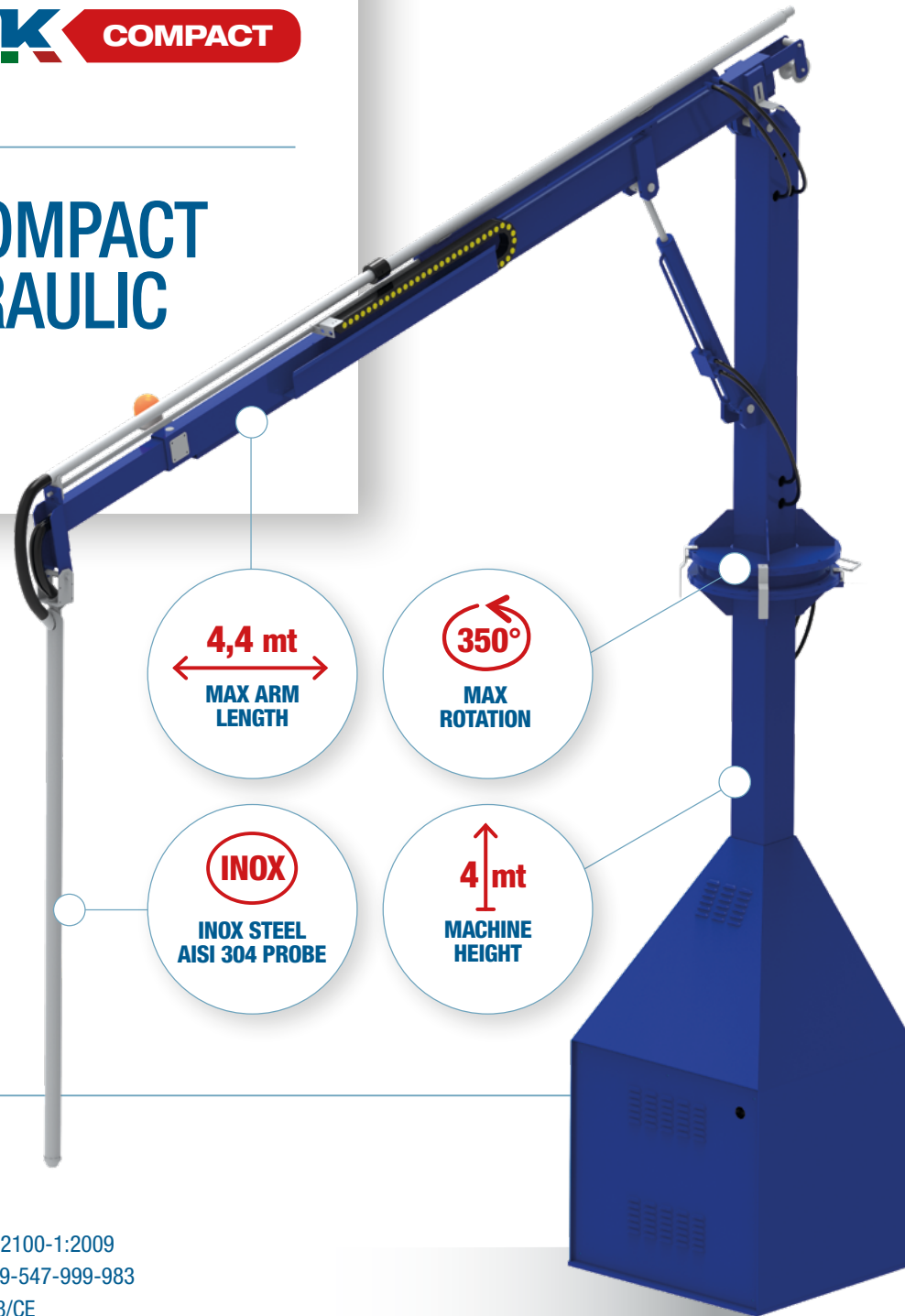


DV Logistic Department





## STORK COMPACT ALL HYDRAULIC



### TECHNICAL FEATURES

**POWER SUPPLY**  
400 VAC 3P + N + E 50 HZ  
**AIR BLOWER**  
THREE PHASE 2,2 KW  
SIDE CHANNEL  
**HYDRAULIC UNIT** 1,5 KW  
**SHIPPING WEIGHT** 830 KG  
**MAX ROTATION** 350°

### EU CERTIFICATIONS

UNI EN ISO 24333-2010 / UNI EN ISO 12100-1:2009  
UNI EN ISO 13857 - 13850 / UNI EN 349-547-999-983  
2006/42/CE / 2006/95/CEE / 20447108/CE

### INCLUDED



### OPTIONAL



### COMPACT

1

TELESCOPIC  
ARM

2

HIGH  
PENETRATION  
POWER, 8 NM

3

PRE ASSEMBLED  
EASY TO INSTALL

4

HOMOGENEOUS  
AND REPRESENTATIVE  
SAMPLE

5

ALL HYDRAULIC,  
MINIMUM  
MAINTENANCE

6

STRONG FRAME  
LONG TERM  
RESISTANCE

7

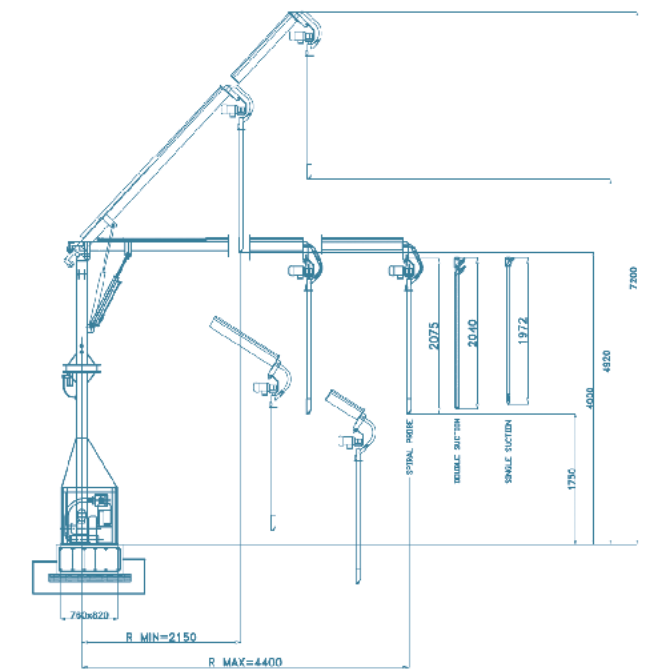
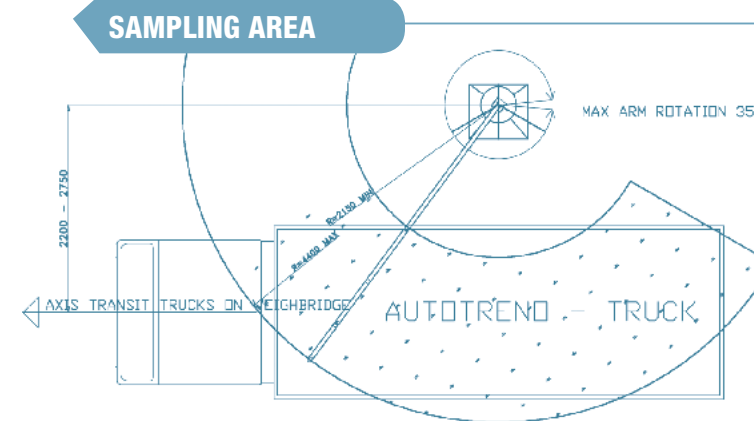
350° ROTATION  
DUAL LANE  
CAPABILITY

8

REACH THE BOTTOM  
OF THE TRAILER

DESIGNED FOR  
**9 MT**  
WHEIGHBRIDGES

### DIMENSIONS



### PROBES SINGLE SUCTION

**STANDARD**  
2000 MM

**OPTIONAL**  
2500 MM  
2700 MM  
3000 MM



### PROBES DOUBLE SUCTION

**STANDARD**  
2000 MM

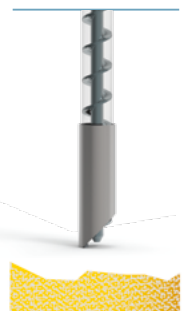
**OPTIONAL**  
2300 MM  
2500 MM  
2700 MM



### PROBES AUGER

**STANDARD**  
2000 MM

**OPTIONAL**  
2300 MM  
2500 MM





## ALL HYDRAULIC STORK RAIL

4,4 mt  
MAX ARM LENGTH

350°  
MAX ROTATION

INOX  
INOX STEEL  
AISI 304 PROBE

5,1 mt  
MACHINE HEIGHT

### TECHNICAL FEATURES

**POWER SUPPLY**  
400 VAC 3P + N + E 50 HZ  
**AIR BLOWER**  
THREE PHASE 2,2 KW  
SIDE CHANNEL  
**HYDRAULIC UNIT** 1,5 KW  
**SHIPPING WEIGHT** 1750 KG  
**MAX ROTATION** 350°

### EU CERTIFICATIONS

UNI EN ISO 24333-2010 / UNI EN ISO 12100-1:2009  
UNI EN ISO 13857 - 13850 / UNI EN 349-547-999-983  
2006/42/CE / 2006/95/CEE / 20447108/CE

### INCLUDED



### OPTIONAL



### RAIL

1

DESIGNED FOR 18 MT WEIGHBRIDGES

2

TELESCOPIC ARM

3

PRE ASSEMBLED EASY TO INSTALL

4

HIGH PENETRATION POWER, 8 NM

5

STRONG FRAME LONG TERM RESISTANCE

6

350° ROTATION DUAL LANE CAPABILITY

7

FOR DOUBLE TRAILERS TRUCK

8

ALL HYDRAULIC MINIMUM MAINTENANCE

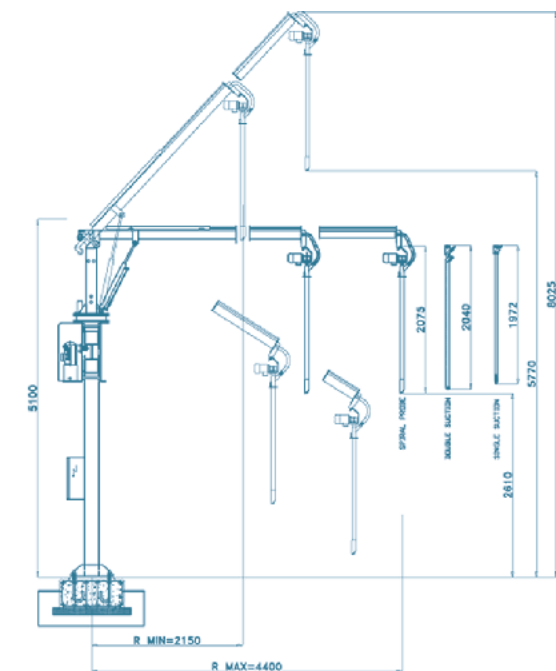
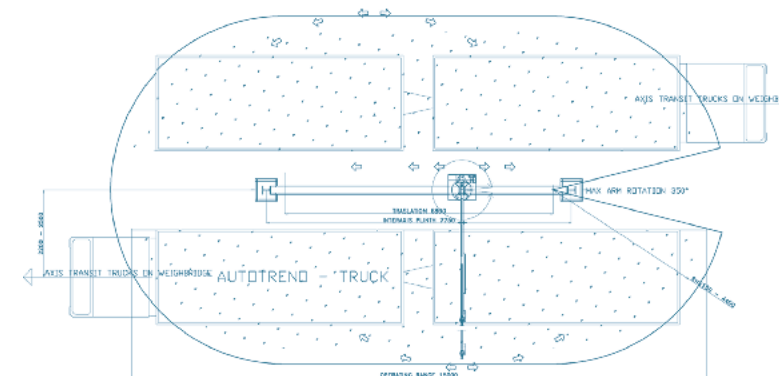
9

HOMOGENEOUS AND REPRESENTATIVE SAMPLE

DESIGNED FOR  
**18 MT**  
WHEIGHBRIDGES

### DIMENSIONS

### SAMPLING AREA



### PROBES SINGLE SUCTION

STANDARD  
2000 MM

OPTIONAL  
2500 MM  
2700 MM  
3000 MM

### PROBES DOUBLE SUCTION

STANDARD  
2000 MM

OPTIONAL  
2300 MM  
2500 MM  
2700 MM

### PROBES AUGER

STANDARD  
2000 MM

OPTIONAL  
2300 MM  
2500 MM





COMPACT AND RAIL

HYBRID SERIES

STORK HYBRID SAMPLERS  
5 SAMPLES IN 60 SECONDS WITH  
SMOOTH AND FAST MOVEMENTS

EU CERTIFICATIONS

UNI EN ISO 24333-2010 / UNI EN ISO 12100-1:2009  
UNI EN ISO 13857 - 13850 / UNI EN 349-547-999-983  
2006/42/CE / 2006/95/CEE / 20447108/CE

60"  
FIVE SAMPLES

FAST  
OPERATIONS

TECHNICAL FEATURES

POWER SUPPLY  
400 VAC 3P + N + E 50 HZ  
AIR BLOWER  
THREE PHASE 2,2 KW  
SIDE CHANNEL  
HYDRAULIC UNIT 1,5 KW  
MAX ROTATION 350°  
SHIPPING WEIGHT  
COMPACT HYBRID 830 KG  
RAIL HYBRID 1750 KG

INCLUDED

WIRELESS  
CONTROL

SUCTION TURBINE  
2,2 KW

WITH INVERTER



OPTIONAL

VIDEO CAMERA  
SYSTEM

COMPACTHYBRID

RAILHYBRID

- 1  
FAST  
OPERATIONS

2  
5 SAMPLES  
IN 60"

3  
ENERGY SAVING

4  
HOMOGENEOUS AND  
REPRESENTATIVE  
SAMPLE

5  
ALL HYDRAULIC,  
MINIMUM  
MAINTENANCE

6  
STRONG FRAME  
LONG TERM  
RESISTANCE

7  
HIGH  
PENETRATION  
POWER

8  
350° ROTATION  
DUAL LANE  
CAPABILITY

HYBRID SERIE / INVERTER / PLC

Thanks to an inverter installed in the electrical cabinet STORK HYBRID samplers are able to take 5 samples in 60 seconds with smooth and fast movements, keeping all the good technical features of the hydraulic series.



PROBES SINGLE SUCTION

STANDARD  
2000 MM

OPTIONAL  
2500 MM  
2700 MM  
3000 MM



PROBES DOUBLE SUCTION

STANDARD  
2000 MM

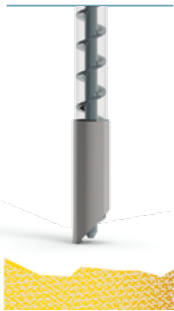
OPTIONAL  
2300 MM  
2500 MM  
2700 MM



PROBES AUGER

STANDARD  
2000 MM

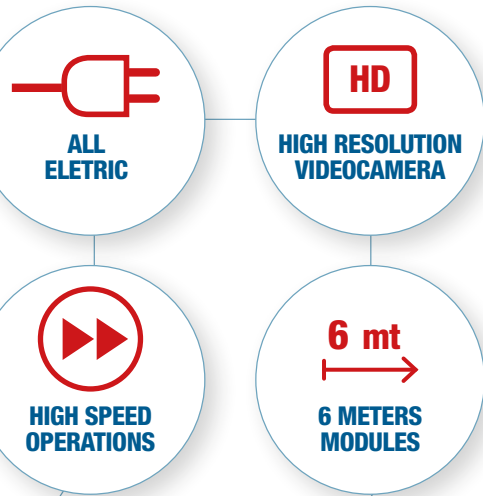
OPTIONAL  
2300 MM  
2500 MM







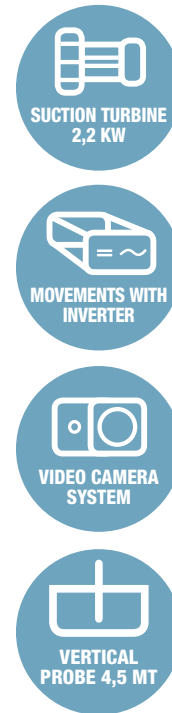
# STORK PRO ALL ELECTRIC



## EU CERTIFICATIONS

UNI EN ISO 24333-2010 / UNI EN ISO 12100-1:2009  
UNI EN ISO 13857 - 13850 / UNI EN 349-547-999-983  
2006/42/CE / 2006/95/CEE / 20447108/CE

## INCLUDED



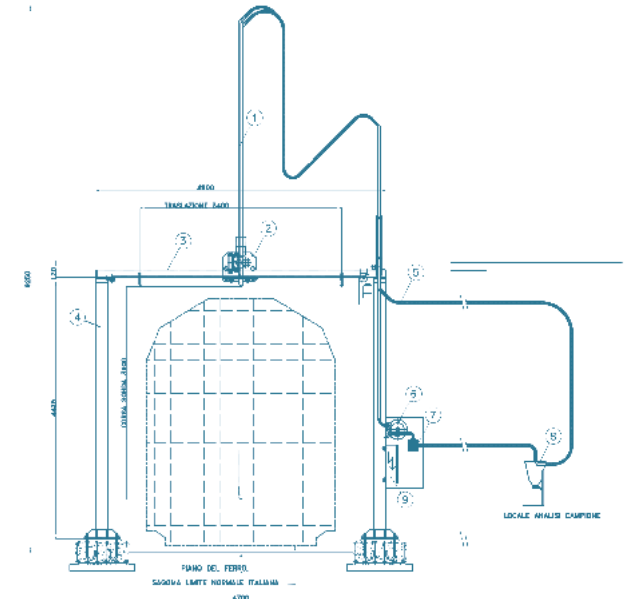
## PRO

- |                              |                                  |   |  |
|------------------------------|----------------------------------|---|--|
| 1<br>ALL ELECTRIC            | 2<br>HIGH RESOLUTION VIDEOCAMERA | 3<br>HIGH SPEED OPERATIONS                | 4<br>6 METERS MODULES                                |
| 5<br>MOVEMENTS WITH INVERTER | 6<br>VERTICAL PROBE              | 7<br>DESIGNED FOR FULL AUTOMATIC SAMPLING | 8<br>SOFTWARE DEDICATED (WINDOWS 8 OR MORE) OPTIONAL |

## SPECIAL DESIGN FOR RAIL WAGONS TANK TRUCKS

## DIMENSIONS

## OTHER VERSION



## TECHNICAL FEATURES

**POWER SUPPLY**  
400 VAC 3P + N + E 50 HZ  
**AIR BLOWER**  
THREE PHASE 2,2 KW  
SIDE CHANNEL





## COMPACT AND RAIL AUTOMATIC SERIES

PROGRAM ON YOUR  
WORKSTATION UP TO SEVEN  
SAMPLING POINTS



## STORK PRO AUTOMATIC SERIES

THE FIRST FULL AUTOMATIC  
SAMPLING SYSTEM  
IN THE WORLD

- 1 FIRST POSITION IS CHOSEN MANUALLY
- 2 MULTIPLE SAMPLES WITH ONE BUTTON
- 3 3 SETTABLE DISTANCES
- 4 SELECT DIRECTION (LEFT TO RIGHT) (RIGHT TO LEFT)
- 5 FROM 2 TO 7 SAMPLING POINT
- 6 PANEL PC TOUCH SCREEN (ITA-ENG-RUS)

### SAMPLING EXAMPLES

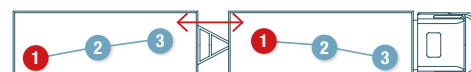
2 / 3 SAMPLING POINTS



4 SAMPLING POINTS

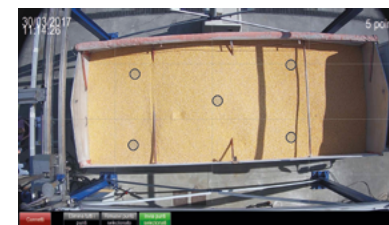


MULTIPLE SAMPLING POINTS

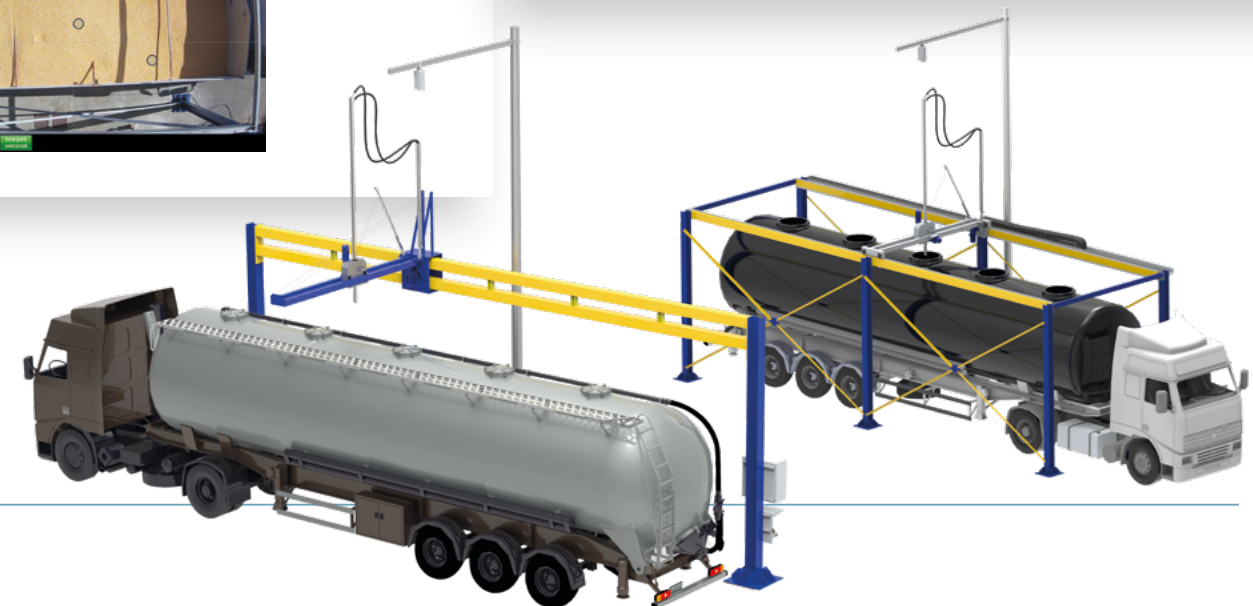


### STORK FULL AUTOMATIC SAMPLING SYSTEM

Together with the development of the STORK PRO we DESIGNED a dedicated software that works with a high resolution videocamera that allows the operator to choose several sampling points and start the sampling cycle with one button. The sampler can work in automatic or manual mode giving to the client a totally customized and freedom operations.



- 1 COMPUTER INCLUDED IN THE SUPPLY
- 2 HIGH RESOLUTION VIDEOCAMERA
- 3 SAVE SAMPLING PATTERNS
- 4 REDUCE HUMAN INPUT
- 5 REPEATABLE RANDOM SAMPLING
- 6 SELECT SAMPLING POINT ON THE SCREEN
- 7 DEDICATED SOFTWARE (WINDOWS 8 OR MORE)





## SAMPLES MORE QUICK AND EASY WITH ORIGINAL ACCESSORIES

### STORK FLUSH BACK SYSTEM



**1**  
SEND THE EXCEEDING MATERIAL BACK TO THE TRUCK

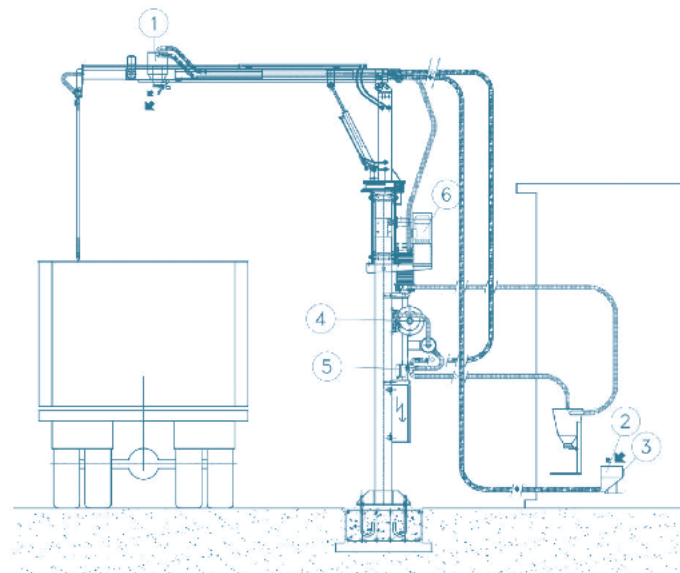
**2**  
SIMPLE TO USE, ONE BUTTON OPERATION.

**3**  
USE THE SAME BLOWER

**\***  
Available also an independent system to send the product to a basin outside the laboratory.

### TECHNICAL FEATURES

- 1** Discharge hopper
- 2** Return hopper
- 3** Remote control
- 4** Suction unit
- 5** Motorized valve
- 6** Motor of hydraulic unit



### TECHNICAL FEATURES

- 1**  
DIVIDING SAMPLES OF GRAIN, SEED AND OTHER GRANULAR PRODUCTS.
- 2**  
DIVIDE 4 KG OF SAMPLE INTO 2 SAMPLES OF 1 KG EACH
- 3**  
ADJUSTABLE BY HANDLE
- \***  
Integrated with Stork flush back system.

### STORK DIVIDER



### TECHNICAL FEATURES

- 1**  
STORK CONVERTIBLE KIT ALLOWS TO USE ALL THE THREE TYPE OF PROBES (SINGLE SUCTION – DOUBLE SUCTION – AUGER ) ON ONE SAMPLER
- 2**  
THE SYSTEM IS DESIGNED IN ORDER TO CHANGE THE PROBE QUICKLY AND EASILY
- \***  
Available for stork compact and rail.

### STORK CONVERTIBLE KIT



### TECHNICAL FEATURES

- 1**  
STORK VIDEOCAMERA SYSTEM IS COMPOSED BY: All in one day and night colour camera, 3,6 mm fixed lens, 800 tvl resolution, 960 H, case waterproof IP 66, 23 infrared leds with a range of 20 meters.
- 2**  
VIDEOCAMERA IS MOUNTED ON THE PROBE WITH A STAINLESS STEEL SUPPORT
- 3**  
TV LED 20" INCLUDED.

### STORK VIDEOCAMERA SYSTEM





# STORK

SALES NETWORK

## STORK AROUND THE WORLD...

Stork samplers are present in more than 30 countries around the world with a solid and qualified distributors' network. Our distributors are able issue commercial offers, install the samplers, and provide technical services...



### EUROPA

- ▶ Belarus
- ▶ Bulgaria
- ▶ Croatia
- ▶ Denmark
- ▶ France
- ▶ Greece
- ▶ Italy
- ▶ Latvia
- ▶ Lithuania
- ▶ Macedonia
- ▶ Moldova
- ▶ Montenegro
- ▶ Norway
- ▶ Poland
- ▶ Portugal
- ▶ United Kingdom
- ▶ Czech Republic
- ▶ Romania
- ▶ Russia
- ▶ Serbia
- ▶ Slovakia
- ▶ Slovenia
- ▶ Spain
- ▶ Sweden
- ▶ Ukraine
- ▶ Hungary

### ASIA

- ▶ Kazakhstan
- ▶ Thailand
- ▶ Uzbekistan
- ▶ Cambodia
- ▶ Vietnam

### SOUTH AMERICA

- ▶ Chile

### OCEANIA

- ▶ Australia
- ▶ New Zealand

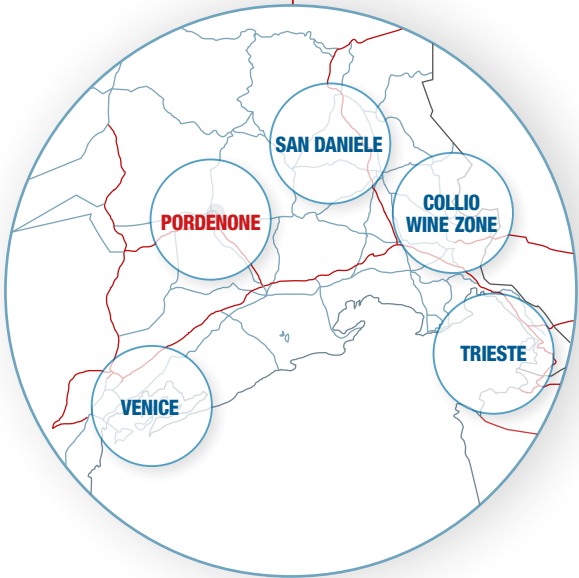
### AFRICA

- ▶ South Africa

# STORK

LOCATION

DV HEADQUARTER IS LOCATED IN PORDENONE, FRIULI VENEZIA GIULIA A NORTHEASTERN REGION OF ITALY.



### FRIULI VENEZIA GIULIA

With its triple-barrelled moniker, Friuli Venezia Giulia's multifaceted nature should come as no surprise. Cultural complexity is cherished in this small, little-visited region, tucked away on Italy's far northeastern borders with Austria and Slovenia. Friuli Venezia Giulia's landscapes offer profound contrasts too, with the foreboding, perpetually snowy Giulie and Carnic Alps in the north, idyllic grapevine-filled plains in the centre, the south's beaches, Venetian-like lagoons and the curious, craggy karst that encircles Trieste. While there's an amazing reserve of often uncrowded historical sights, from Roman ruins to Austro-Hungarian palaces, this is also a fine destination for simply kicking back with the locals, tasting the region's world-famous wines and discovering a culinary heritage that will broaden your notions of the Italian table. Serene, intriguing Trieste and friendly, feisty Udine make for great city time – they're so easy and welcoming you'll soon feel as if you're Friulian, Venezian or Giulian too.

[www.lonelyplanet.com](http://www.lonelyplanet.com)

### VENICE > 90 KM



### TRIESTE > 105 KM



### COLLIO ZONE > 90 KM







**D.V. srl**  
**Depuration Vehicular**  
Via E. Ellero n.9 33080 Cusano di Zoppola (Pn) Italy  
Tel. 0039\_0434 574192 r.a. Fax 0039\_0434 977070  
info@dvsrl.com www.dvsrl.com



[www.grainsamplers.com](http://www.grainsamplers.com)

graphic: **centrone des ign**  
studio







[www.grainsamplers.com](http://www.grainsamplers.com)

---



**DV** *SRL*

Soluzioni Tecnologiche  
per l'Industria Agroalimentare

---

[www.dvsrl.com](http://www.dvsrl.com)